

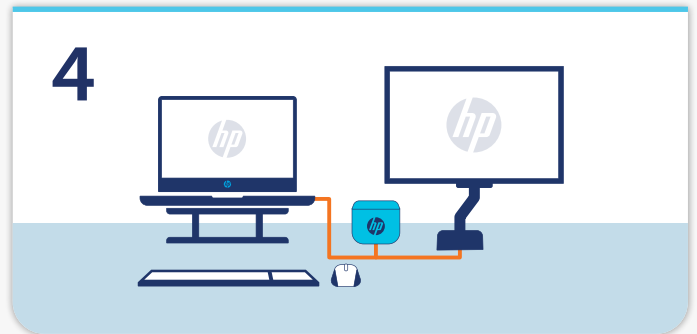
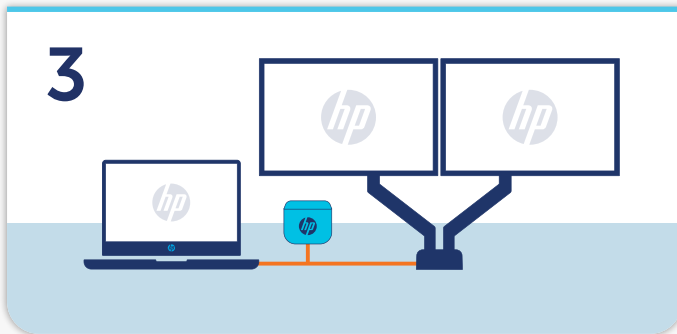
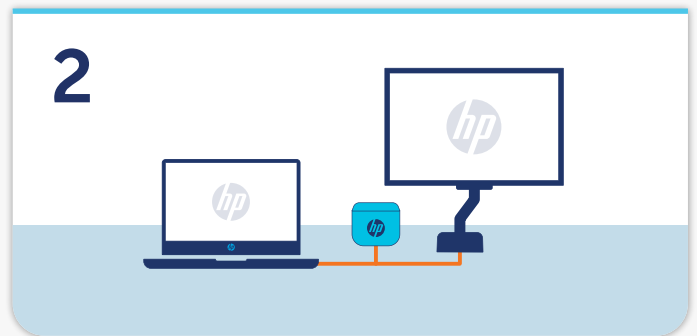
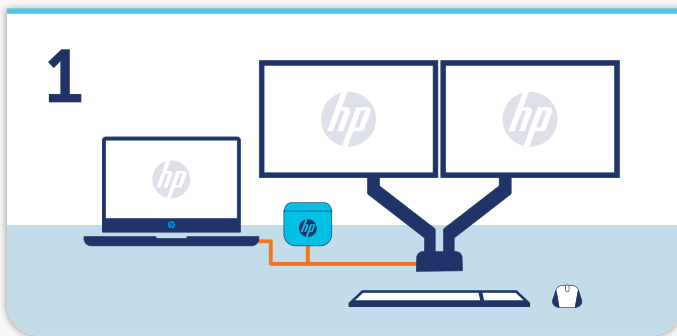
# Docking Stations Made for the Future of Education

The eruption of COVID-19 required many teachers, parents, and students to rapidly adjust to new modes of learning. Globally, around 87% of the world's population have been affected by school closures, resulting to remote learning.<sup>1</sup> This increased digital implementation into classrooms to make teaching and learning more accessible for anyone from anywhere.

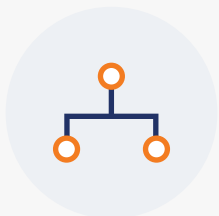
As education leans to a hybrid structure, teachers and students need to be prepared to cater for a more digital presence. But what does this look like?

**HP offers a range of versatile docking setups, tailored specifically for education that allow for more agile teaching, bridging the gap between portability and having a stationary place to work.**

## 4 ways to set up for remote teaching:



## What makes HP Docking Stations so popular?



Seamless teaching  
with hassle-free  
connecting to laptop



One hardware  
piece only



Longer life span  
of 6 years



Cost and  
time efficient

Want to learn more?  
Visit [www.neweratech.com](http://www.neweratech.com) for more  
info about our solutions and services.



intel.

<sup>1</sup> <https://en.unesco.org/news/unesco-rallies-international-organizations-civil-society-and-private-sector-partners-broad>

Intel, the Intel logo, and Intel Core are trademarks of Intel Corporation or its subsidiaries.